

The Gateway Resource

1582 Pembina Avenue West; Box 1448 Winkler, MB R6W 4B4
Phone: 204-325-7304/Fax: 204-325-1958
www.gatewayresourcesinc.com

Kim's Komments



The start of the summer season is always an exciting time. Summer means a break from the normal routine, outdoor activities, and the anticipation of holidays/summer breaks.

At Gateway, one of our summer activities is the Annual Board and Staff Picnic planned by the Wellness Committee. This event gives us the opportunity to spend time/get

to know fellow employees outside of our work environment, along with our families, for an evening of fellowship and fun.

Thank-you to the Wellness Committee for your time, planning, and preparation into making this an enjoyable evening.

Once again Gateway has been making some changes and improvements to the physical structure in many divisions. Even with all the on-going changes, Gateway continues to pull together; continues to build on the strong

“foundation” that Valley Rehab and ACL was built on. The innovation, long-term partnerships, close customer relationships, and our unique culture and values remain strong within our organization.

A big thank you to you, the employees, for the ways you are connected to the work and services provided by and for individuals with intellectual disabilities in our community! Have a wonderful summer!

Sincerely,
Kimberly Nelson, CEO

Upcoming Events

- July 11-15, Week 1 of Summer Break
- July 18, Back to Work
- August 1, Civic Holiday
- August 8-13, Week 2 of Summer Break and Camp Assiniboia
- August 15, Back to Work
- September 5, Labour Day

Annual General Meeting



On June 28th at 7:00 p.m. our Annual General Meeting was held at Gateway Resources in the dining hall.

The theme for this last fiscal year was ‘Rising from the Ashes’ and that is what Gateway has done, and continues to do.

Brian Derksen, Board Chair, ran the meeting, sharing his passion for being on the Board of Directors.

Mabel Wieler presented the auditor’s finding and Kim shared information on each division of the organization. The addition of a new board member, Rebekah Baerg, was made official.

Other highlights of the evening included viewing a video, created by Patrick Simoens, and hearing reports given by guest speakers Stephanie Unger, Patsy Wharf and Chrissy Peters.

The evening was followed by coffee and dainties. Thank-you to all who attended.



Spring Friendship Dance



The 5th Annual Friendship Dance was held at Gateway on April 1 from 7 to 9 pm. Lissa Thompson and Kim Wall headed this event and started planning in early January. The dance had an 80's theme. Most of the decorations - pacman and ghosts, cassettes and records, were handmade and hung from ceiling.

We had people attending from Carman and Altona and it was exciting to see that the dance floor full the entire night. A shout out goes to Shelley Crawford of Morden who was the music DJ. She has been our DJ for the dances in previous years and knows most of the participants. Thank you to our Gateway Residences who baked all the cookies and cakes for the dance.

Prizes/winners at the dance were as follows: 4 Bomber tickets, donated by the team, won by Jennifer Wawyn; 4 Goldeyes Tickets, donated by the team, won by Jon Wiebe; Charity Faye Spa Gift Card, donated by Charity Faye, won by Carole Badiou; 32" TV, donated by Eco Plus, won by Jennifer Makisymic; iPad Mini, donated by Access Credit Union, won by Chelsey Bugden; Hot Tub Rental, donated by Hot Tub & Spa, won by Judy Derksen. A good time was had by all!

Gateway's Second Annual Fundraiser

On Saturday, April 16th, Gateway Resources had their 2nd Annual Fundraiser at the PW Enns Centennial Concert Hall.

One purpose of these fundraisers is they allow those not affiliated with Gateway to see what our organization is all about. The Committee had decided to bring in Country Singer 'Quinton Blair' as the main act with Linda Hiebert doing the opening act. Once again we were thankful for Chris Sumner for MCing the evening. Another job well done, Chris. We felt, as a Committee, it was important to have a qualified sound technician at the Sound Board and we hired Clarity Productions (Dustin Thiessen).

After the sound check was completed, we had a meal catered by George Klassen Catering where the Board, Committee Members, and Volunteers were given the opportunity to meet Quinton Blair and his Band, and Linda Hiebert.

Patrick Simoens compiled two Power Point presentations for the evening. The first was shown at the beginning of the concert, "A Day in a Life at Gateway."

The second presentation done just before the intermission consisted of interviews with various Gateway staff, participants, and Board Members. Well done Patrick!

The Winkler Foundation, represented by Myra Peters and accompanied by Judy Friesen, set up a table in the entrance area of the concert hall, presenting an opportunity for those who wanted to make a further donation to Gateway Resources.

Despite the fact that the attendance/ticket sales were not quite what the Fundraising Committee was hoping for, we were happy to see that, in the end, a profit was made, and it was a great evening.

I would like to thank each of the Committee Members for the time you took to

attend planning meetings and the work you did in making this evening a success.

The Fundraising Committee Members are as follows:

Kim Nelson, Brenda Pohl (Secretary), Alesha Hildebrand, Chris Sumner, Dianne Hildebrand, Carrisa Wall, Denise Enns (Treasurer), Iris Luzek, Loni Derksen, and Vic Klyne (Chair).

Submitted by Vic Klyne



Greetings from the Wellness Committee

The Wellness Committee first wants to thank all staff who came out for the picnic on June 16th at the Winkler Park.

We had an amazing meal provided by The Bunker. After the meal, all those that wished to swim made their way to the Winkler Pool for the rest of the evening.

It was a beautiful evening filled with laughter and fun and we heard a lot of positive feedback about this night, including the new location.

We are now planning a Golf Tournament which will be held on July 22nd at 6:30 p.m. at the Roland Golf Course.

No matter what your ability, or if you would like to golf for the first time, this event will be a great night out! If golf really isn't your thing, staff is still welcome. This will be open for staff and their significant other.



Sign-up deadline is July 15.

As a Wellness Committee, we are always open to suggestions about health and wellness. If you have a great idea to promote health and wellness within our organization we would love to hear it!

The following staff are part of the Wellness Committee:

Bonnie Dobson, Co-chair
(204) 325-7304 Ext. 233
bonnie@gatewayresourcesinc.com

Tina Wolf, Co-chair
(204) 325-7304 Ext. 229
tinawolf60@gmail.com

Denise Thiessen, Secretary
Judy Friesen, Treasurer
John Loewen, Member
Sheila Dick, Member
Tyler Loewen, Member

An Interview with Ron Gerbrandt

Interviewer: (Sheila Dyck) What is your main job at Gateway?

Ron: My title is Director of Operations. I co-ordinate recycling and woodworking operations.

Interviewer: How long have you been here?

Ron: Just under 10 years.

Interviewer: Why Gateway?

Ron: I was looking for a workplace with a more person or mission-centered focus than what I was in at the time. My first position at Gateway was in the wood room. I then transitioned into the Recycling Director role for a number of years. When the management structure changed from separate directors for the wood room and recycling areas, I transitioned into the Director of Operations position. This position entails general oversight, leadership, and planning for the continued success of the wood products and the recycling divisions. The position is also responsible for the bus

transportation to and from work for many of the participants. Maintenance of the buildings and yard at our main site at 1582 Pembina Avenue are also the responsibility of the Operations department. With a number of building projects happening, in addition to the normal day-to-day activities, this position is rarely boring or entirely predictable. I enjoy interacting with the participants, and have a great team of staff to work with.

Outside of work, I enjoy reading, playing shinny hockey, playing with our grandchildren, and serving in my church.

Interviewer: What does a 'normal' day look like for you?

Ron: You plan for the day, have an agenda, and when you walk into the building, things come up and there are probably only a few things on the agenda that get done that day, so flexibility is a good thing.

Interviewer: What surprised you with this job?

Ron: The depth of the relationships. I have really enjoyed the time and the people more than I was expecting. I thought it might be hard and difficult, but mostly it's fun.

Interviewer: Anything new in the woodroom/recycling area?

Ron: Because of the fire history, buildings have been replaced - this adds to business and opportunities. We are building a building where Building 4 burned down on March 27, 2014. We are also in the process of starting/setting up a recycling sorting line. This will be sometime in the near future.

Interviewer: Here's a 'million dollar' question. What would you do for Gateway if you had a million dollars?

Ron: I would buy some new vehicles, some new equipment and a new forklift.

Interviewer: Thank you Ron.



Highlights of the Annual Board/Staff Picnic



An enjoyable evening spent with co-workers/family eating good food, winning prizes, going swimming...



Life Enrichment Program Division

Excerpts from the Annual Report

It's hard to believe another year has flown by! Thanks to a dynamic group of the 19 Direct Support Professionals in this Division who truly believe in the Gateway Vision and Mission statement.

The Life Skills Program continues to offer full time programming for 25 individuals and 7 part time individuals. As the life skills area expands adding new participants we also welcomed the addition of a new space; the transformation of the packaging room to the Dr. Wiebe Room, named after our founder whose vision was 'people with disabilities need purpose in their lives.'

The Learning Centre Program continues to provide learning opportunities to 77 participants who rotate through the Learning Centre program on a weekly basis. One highlight of the learning center was gaining knowledge about the elections and going to Winnipeg to meet the candidates and hear their platform on "disabilities matters." Modules covered in the Learning Centre include: understanding the Vulnerable Persons Act, budgeting, reading, building resumes, manners, internet safety, introduction to new technologies and many other topics and special interest projects.

The Community Learning Programs range from sewing, kitchen, sign language, fitness, green team, art, summer aqua-fit, family literacy and music exploration. We have the involvement of 191 participants. We piggyback with the Humane Society by volunteering with their job chores and in return getting some pet therapy for people. We are doing all the baking at the Winkler

Family Resource Centre for their drop in coffee breaks and provide a program through the Manitoba Coalition for Healthy Children teaching early English through rhymes, activities and songs to young families and new immigrants to the area.

The Gateway Job Development Program presently has 65 participants in the program. We are excited to be teaming up with Katie Cares Cottage and the Voice paper. A big thank you to the local area businesses for the excitement of successes and the independence you have helped to create for many of the people we serve.

After a lot of planning, we also have developed a Senior Activity Centre, highlighted below.

We have seen a rebirth in the Gateway Kitchen from new flooring, windows, paint, dining tables, and freezer and open shelves rather than cupboards. It looks great and helps to make the kitchen flow efficient.

Helen Warkentin manages the Gateway Kitchen and has a part time Direct Support Professional and 8 ladies that prepare and serve lunch and two coffee breaks every day. The kitchen schedule is such that each one is able to do each kitchen job. They also assist with the weekly local shopping helping them to learn about budgets, where in the store items are found, and what is needed. This activity also helps participants connect with their community.

The Gateway cleaning crew is spearheaded by Pearl Klyne. A rotational list of cleaners are given directions and supported in all aspects of cleaning and

beautifying Gateway. They are learning how to clean following the WHIMIS handling and training, proper maintenance of machines, and proper work etiquette.

The biggest challenge in this position is coordinating transportation for participants working in the community and groups going into the community for activities. When vehicles are in need of safety checks and repair it can sometimes halt programs to a stop.

We would like to thank our community volunteers for sharing their time and talents. Only through their dedication to our programs are those programs successful. We would like to thank the Winkler Flyers who share their reading talents for "I Love to Read" month. Many thanks to our Wednesday art volunteer who creatively transformed the art room into a place of interest and pulled out people's passion for art. Thanks to the Winkler Fire Hall for their participation in fire prevention week and educating us with hands on demonstrations at Gateway. We would also like to thank the Morden and Winkler businesses that open their doors to give us educational tours.

Life Enrichment is in the early stages of planning a fundraiser car wash / barbeque in August.

As I look forward to the coming year and the new challenges, it is easy knowing that I have an amazing team of Directors, Managers and Direct Support Professionals that love their job as much as I do! Together we continue to build a fantastic place and programs for the people we serve.

What's Happening in the Senior Program?



There are always many things happening in the Senior Program. Some community events that we have attended are Food Truck Friday

at Bethel Park, a pulled pork lunch at the Bunker, and the grand opening of the new Buhler Active Living Centre (BALC), which had a waffle breakfast and ribbon cutting.

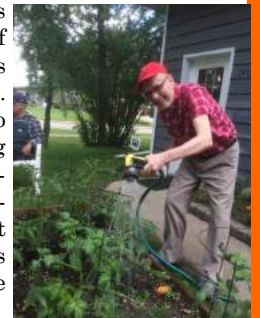
Some of our participants have tried out the gym at the BALC and had coffee

there. Now that it is open again we plan to participate in as many activities there as we can!

Here in our program space we have been doing our usual activities such as bingo, board games, puzzles, hobbies



(knitting, model building), walks, and an assortment of lawn games (Bocce, Ring Toss etc). A few times a week we have a group sing-along with guitar and various other instruments. We built a garden box in the front yard and the participants help take care of the vegetables we are growing. They have also been learning about composting, online safety, and tourist destinations such as France and Arizona.



Renewal in Gateway's Housing

Renewal in Gateway's housing has been focused on re-thinking the potential of our two oldest residential properties-Mountview in Morden and Our Home in Winkler. Here are some glimpses into the story of these two homes . . .

Back in the mid-1970's, Associations for Community Living (ACL) in Morden and Winkler built the first residences for individuals living with an intellectual disability. Each of them had rooms for 10 to 12 people, and had live-in house parents. This was, for many individuals and families, the first opportunity for adults with intellectual disabilities to take that step of leaving their family home and living in their own home in the community. It was a big leap forward!

In 2002, these Morden ACL and Winkler ACL joined with Valley Rehab to become Gateway Resources Inc. In 2015, after 40 years of wear and tear - and changes in the way we provide housing supports to individuals in our community - Gateway's Board of Directors made strategic decisions about changes to these two original residences.

2016 - It starts!!

Our Home

- January- Years of stored items cleared from basement hallway and house-parent suite at Our Home in Winkler
- February-Remodeling begins, converting basement hallway into a Supported Independent Living training suite
- April- Main floor house-parent suite gets a complete remodel and face-lift to become a 1-bedroom suite available for emergency respite
- June- Two graduate Occupational Therapy Students begin 6-week project to develop a 12-week SIL Training Program
The Our Home main floor residence will remain home for five individuals.

Mountview

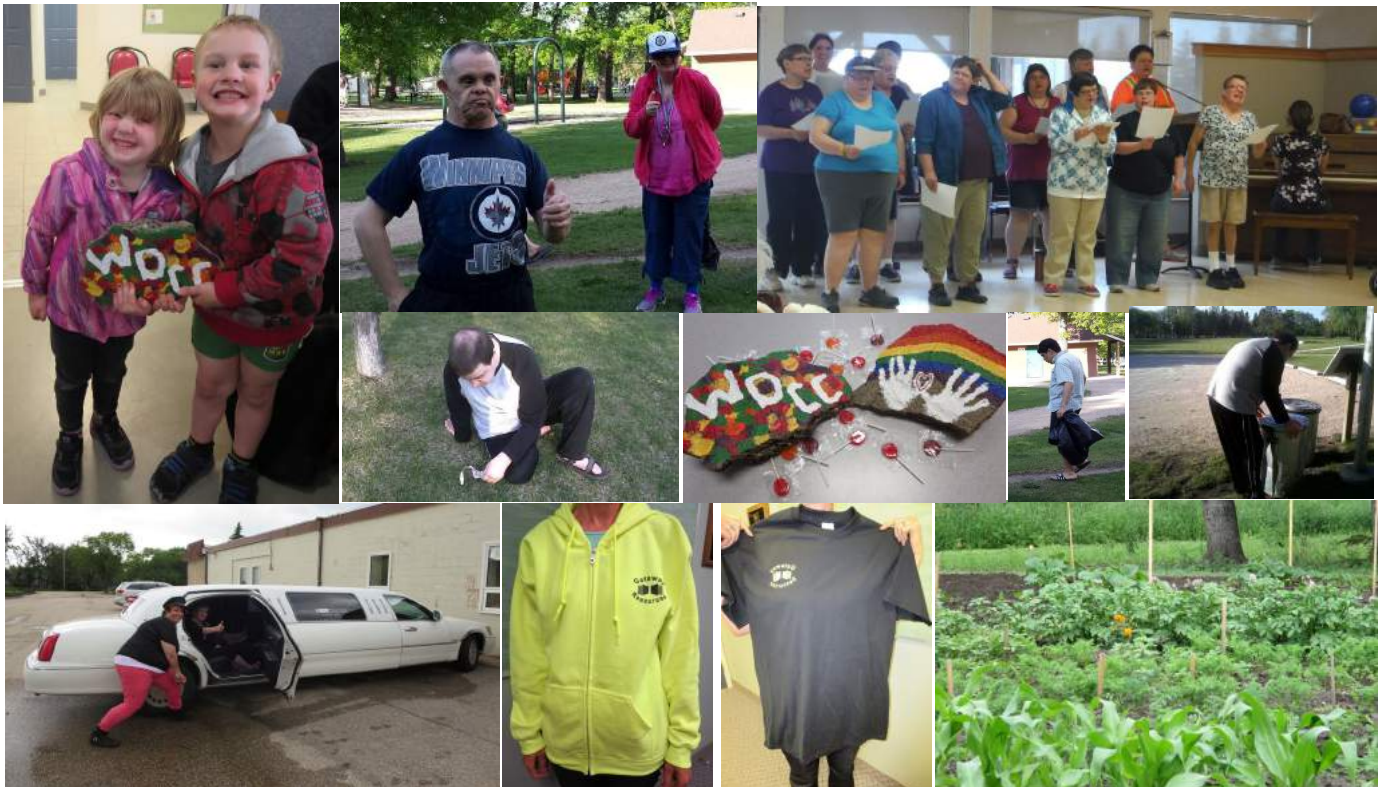
- Pinnaco is hired to build two 3-bedroom side-by-side homes at the Mountview site in Morden
- New house plans are reviewed and finalized. These will replace the existing residence.
- Site development begins to lay the foundation for new homes. Current Mountview residents have front row view of the action!
- The foundation is poured, and the walls begin to go up.
- Goal is for Mountview residents to move to their new homes in November.



We have used our existing land and resources to create housing alternatives to meet the changing needs of individuals in our region. We are so excited to see what possibilities will open up for individuals who make their home in these new spaces!

Submitted by Dianne Hildebrand, Director of Housing

Pay it Forward ... and Other Items of Interest



Is Verna getting ready to 'Ride out in Style?'

Have you ordered? Which will it be?

The Gateway Garden - Lush as always.

Camping

Find words about camping in this puzzle

O T F I S H I N G D E O M B I E K M M Y B S D
 H I K I N G K N V B M I V X S A E T S S E R L
 S E S A G C M D C B R W V O B K N X T Q A A I
 W Z W A T E R F A L L S O Z P S L O X U T E F
 V T Q E G F U N L L I M Y A L P P E L I Y B E
 S O H A R V O L L E Y B A L L T F K G R A M J
 D W M G F I R E H O L E C A N Y O N T R N S A
 P E I Q I T F A W W N K E I F Y I E Q E D L C
 S N F M R L N P I D R B A U A M E K I L T E K
 S S K E M A H L M A J P F R O N N S D S H E E
 C O E M T I D S P A T K P Y O O P H N N E P T
 L S U N O L N D A S C S W T N I I O U B B I U
 I V O V I S N G I L G K S I E N R L O J E N G
 F M X F E A Q T S U F W E P V U T D R W A G S
 F R E T L N R U B U O R R G O E D F G H S B E
 J P I S E A I S I L I I O N H R A A P V T A V
 U W I V C K K R L T Z T M I C Y O I M H C G L
 M H P Z E C N E S E O R S B T L R T A O A P O
 P F H U O R Y A S L N S O U U I T H C T M I W
 I M A R S H M A L L O W S T D M E F N D P L D
 N F C O L A F F U B J K Y N T A N U R O I L K
 G X E S J R L M U K G A M V Q F T L R G N O V
 K I T E R U T A N S S R E S Y E G J O S G W H

ARTIST PAINTPOTS
 BEARS
 BEATY AND THE BEAST
 BLANKET
 BUFFALO
 BUGSPRAY
 CAMPFIRE
 CAMPGROUND
 CAMPING
 CLIFF JUMPING
 DUTCH OVEN
 ELK
 FAMILY REUNION
 FIREHOLE CANYON
 FISHING
 FLASHLIGHT
 FUN
 GAMES
 GEYSERS
 HIKING
 HOTDOGS
 ISLAND PARK
 LAKE
 LIFE JACKET
 MARSHMALLOWS
 MONTANA
 MARSHMALLOWS
 MOOSE
 MOSQUITOS
 MONTANA
 MOOSE
 MOSQUITOS
 NATURE
 OLD FAITHFUL
 PILLOW
 PLAYMILL
 PRIZES
 RIVER
 ROAD TRIP
 ROCKS
 SLEEPINGBAG
 SMORES
 SOUVENIRS
 SQUIRRELS
 SWIMMINGSUIT
 TENT
 TREES
 TUBING
 VOLLEYBALL
 WATERFALLS
 WILDLIFE
 WOLVES
 WYOMING
 YELLOWSTONE

Smackos

A delicious dessert quesadilla to try while sitting around the campfire...



This is an old camping dessert favorite from Girl Scouts. I believe the recipe was called *Smackos* probably because they're lip smacking good.

- 1 9" flour tortilla
- 1 Banana
- Peanut Butter
- Mini marshmallows
- Chocolate Chips

Spread peanut butter onto 1/2 of tortilla. Cover with banana slices, marshmallows, and chocolate chips. Fold other half over.

Place on a grill over a camp fire until the edges start to turn brown and the insides are melted. Cut into quarters (works well with a scissor) and enjoy!

Make sure you have enough ingredients on hand because after you have one you will probably want more. Other topping options could include, but are not limited to, butterscotch chips, Nutella, apples, coconut, raisins, etc.

Enjoy the Summer!